


REV A	APPLICATION			REVISIONS		
	PRODUCT LINE	REV	DESCRIPTION	DATE	APPROVED	APPROVED
SH 1	IDU-III	A	Initial Release per DCN W3184	11/18/2003	Vern Wallace	Robert DuRall
DWG. NO. 150-045972						

THIS DOCUMENT CONTAINS PROPRIETARY INFORMATION OF WULFSBERG ELECTRONICS, A CHELTON GROUP COMPANY, NEITHER RECEIPT NOR POSSESSION THEREOF CONFERS ANY RIGHT TO REPRODUCE OR USE, OR DISCLOSE, IN WHOLE OR IN PART, ANY SUCH INFORMATION WITHOUT WRITTEN AUTHORIZATION FROM WULFSBERG ELECTRONICS

		 Wulfsberg Electronics <i>A Chelton Group Company</i>			
APPROVALS		DATE		TITLE: SERVICE BULLETIN WSB IDU-III-8 (NAVIGATION DATABASE ERROR)	
DRAWN Robert DuRall		11/18/2003			
CHECKED Dean Boston		11/18/2003			
PRODUCT MANAGER Mark McCormack		11/18/2003			
ENGINEER		SIZE	CAGE CODE	DWG NO.	REV
ISSUED Vern Wallace		A	1B7G3	150-045972	A
Typed signatures indicate approval. Handwritten signature approval of this document is on file at Wulfsberg Electronics, Prescott, Arizona.		SCALE: NONE		DO NOT SCALE DRAWING	



Wulfsberg Electronics
A Chelton Group Company

SERVICE BULLETIN

EQUIPMENT: IDU-III

DATE: November 18, 2003

BULLETIN NUMBER: WSB IDU-III-8 Revision A

EFFECTIVITY

This service bulletin applies to the following:

Navdata Release: Cycle 0311

REASON

Navdata contains erroneous altitude leg in JNU RNAV (GPS) V RWY 8 approach.

DESCRIPTION

This modification updates the application software to 4.1A.

COMPLIANCE

Mandatory

CANCELLATION

Upon updating with new build of cycle 0311 navdata.

WARRANTY INFORMATION

This modification corrects cycle 0311 of the Navigation Database.

APPROVAL

This modification does not affect the original approval.

MANPOWER

Not Applicable.

REFERENCES

System Installation Instructions, 150-045264.

MATERIAL INFORMATION

None

PARTS REQUIRED

<u>ITEM</u>	<u>QTY</u>	<u>U/M</u>	<u>PART NUMBER</u>	<u>DESCRIPTION</u>	<u>REF</u>
1	1	ea		Navigation Database Cycle 0311	

NOTE: Navigation database can be downloaded from the Chelton Flight Systems web site at www.cheltonflightsystems.com/download.

BACKGROUND

A new RNAV (GPS) V RWY 8 approach was introduced with the cycle 0311 navdata. The approach uses an immediate left turn as the first part of its missed approach procedure. See approach plate below:

JUNEAU, ALASKA

AL-1191 (FAA)

RNAV (GPS) V RWY 8 JUNEAU INTL (JNU)

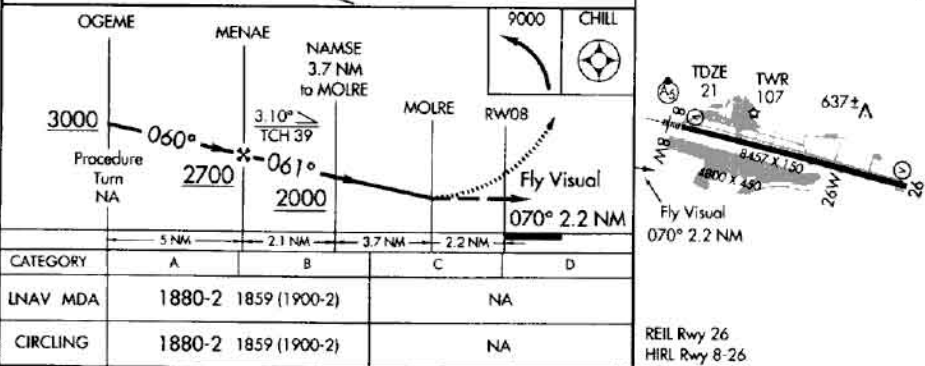
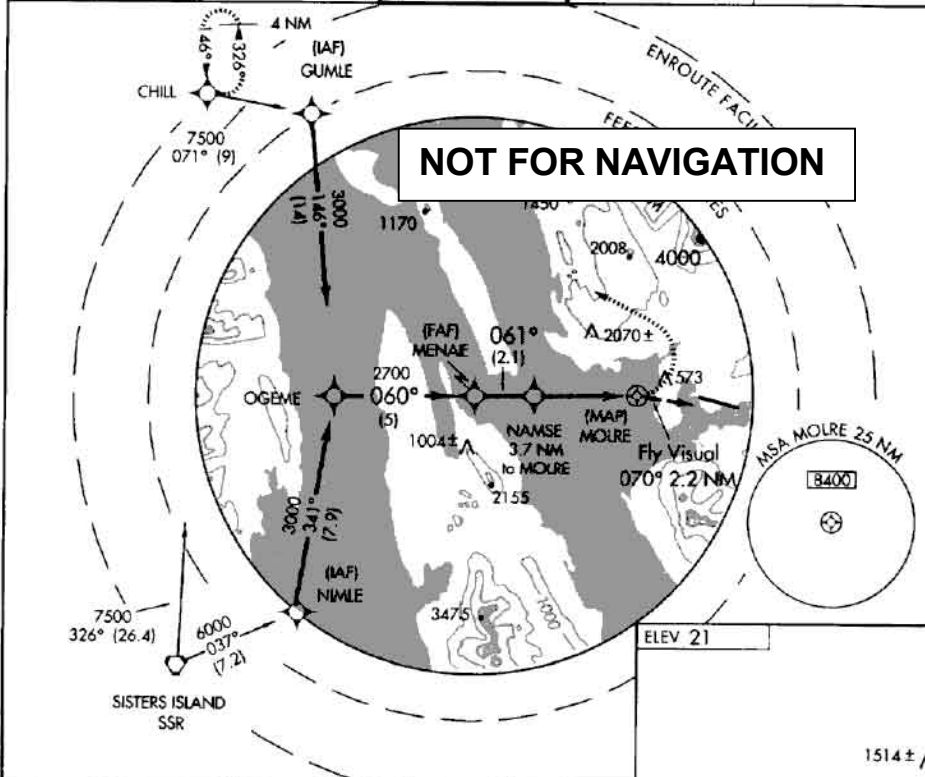
APP CRS 061°	Rwy Idg TDZE Apt Elev	8457 21 21
------------------------	-----------------------------	---------------------------------------

GPS or RNP-0.3 Required. DME/DME RNP-0.3 NA.
 NA Circling NA north of Rwy 8-26. Circling NA at night.
 Lead-in lights not aligned with final approach course

MALSR

MISSED APPROACH: Climbing left turn to 9000
 direct CHILL WP and hold.

ATIS 135.2	ANCHORAGE CENTER 133.9	JUNEAU TOWER * 118.7 (CTAF) 278.3	GND CON 121.9	JUNEAU RADIO 122.2
----------------------	----------------------------------	---	-------------------------	------------------------------



JUNEAU, ALASKA
 Orig 03303

58° 21' N-134° 35' W
 209

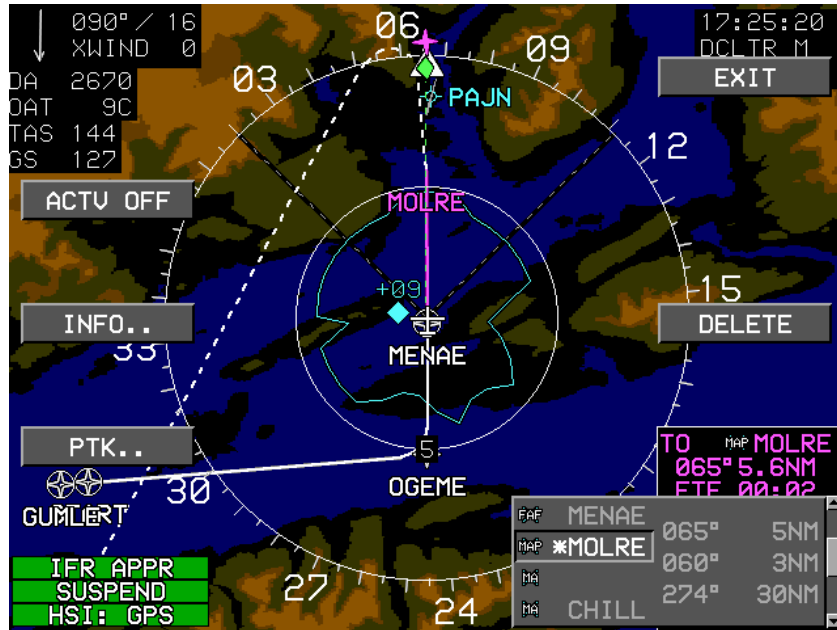
RNAV (GPS) V RWY 8 JUNEAU INTL (JNU)

The government source coding (Form 8260-3) for this approach included an erroneous climb to altitude leg as the first leg of the missed approach procedure. This error was propagated from the government source through Jeppesen and Chelton and into the

field as part of the cycle 0311 navdata. In accordance with its DO-200A process, Chelton has corrected the error with notification to and concurrence from Jeppesen. The corrected navdata complies with ARINC424-16 Attachment 5 Rule 9.4 and is now available for use from Chelton's website.

MAINTENANCE ACTION

1. Correction of navdata is only required for equipment using Americas and World navdata on which the cycle 0311 navdata containing the error has been loaded. Use the following procedure to determine if the equipment contains the erroneous navdata:
 - a. Insert a SmartMedia card into the IDU and apply power.
 - b. Select option "A" from the Ground Maintenance Functions to start the demonstrator program.
 - c. Using the demonstrator's flight plan creating function, create a flight plan from Juneau (PAJN) to Anchorage (PANC).
 - d. Activate the flight plan created above. This repositions the demonstrator to the Juneau area.
 - e. Using the demonstrator's nearest (NRST) function, create a flight plan from present position to Juneau (PAJN).
 - f. Using the demonstrator's active (ACTV) function, activate the RNAV (GPS) V RWY 8 approach to Juneau.
 - g. If the navdata contains the error, the approach will appear as follows (note straight leg as first segment of missed approach procedure and a waypoint without a name between MOLRE and CHILL on the flight plan listing):



2. If the equipment contains the erroneous navdata, download the corrected navdata from Chelton's website and load into the equipment in accordance with the Installation Instructions.
3. After loading the corrected navdata, confirm by repeating the process from step 1 above. After correction, the approach will appear as follows:



4. Repeat for each IDU installed in the aircraft.