


REV	APPLICATION			REVISIONS		
	PRODUCT LINE	REV	DESCRIPTION	DATE	APPROVED	APPROVED
SH	DM-441B	A	Initial Release per DCN W5388	7/25/06	S. Wagner/C Estes	D. Woodhurst
DWG. NO. 150-042559						

THIS DOCUMENT CONTAINS PROPRIETARY INFORMATION OF WULFSBERG ELECTRONICS, A CHELTON GROUP COMPANY, NEITHER RECEIPT NOR POSSESSION THEREOF CONFERS ANY RIGHT TO REPRODUCE OR USE, OR DISCLOSE, IN WHOLE OR IN PART, ANY SUCH INFORMATION WITHOUT WRITTEN AUTHORIZATION FROM WULFSBERG ELECTRONICS

		 Wulfsberg Electronics <i>A Chelton Group Company</i>			
APPROVALS	DATE			TITLE: SERVICE INSTRUCTION WSI DM-441B-18 REPLACE RECEIVER MODULE VARI-CAPS C15-20 TO IMPROVE RELIABILITY	
DRAWN LESLIE EVANS	6/18/06				
CHECKED JAY JENSEN	6/18/06				
PRODUCT MANAGER BOB EVANS	7/25/06				
ENGINEER STEVE WAGNER	7/17/06				
ISSUED DIANA WOODHURST	7/25/06	SIZE A	CAGE CODE 1B7G3	DWG NO. 150-042559	REV A
Typed signatures indicate approval. Handwritten signature approval of this document is on file at Wulfsberg Electronics, Prescott, Arizona.		SCALE: NONE		DO NOT SCALE DRAWING	



Wulfsberg Electronics
A Chelton Group Company

SERVICE INSTRUCTION

EQUIPMENT: DM-441B

DATE: July 25, 2006

SERVICE INSTRUCTION NUMBER: WSI DM-441B-18 Revision A

EFFECTIVITY

Effects PN 066-1107-xx identified with SN 43263 or below.

Units with any serial number above 43263 shall meet compliance of this procedure at the time of manufacturing.

REASON

Improve Receiver Module (PN 300-07559-0000 / -0002) reliability.

DESCRIPTION

Remove the original Receiver Module variable capacitors C15 through C20 and replace with more reliable components.

COMPLIANCE

As required.

WARRANTY INFORMATION

This modification is an enhancement and is not covered under warranty.

APPROVAL

This modification does not affect the original approval.

MANPOWER

Not applicable.

REFERENCES

DMS 44A Maintenance Manual, P/N 150-040970

DMS 44A Maintenance Manual, P/N 006-00959-0008

MATERIAL INFORMATION

The parts required to modify this unit in accordance with this procedure are available from Wulfsberg Electronics at (928) 708-1518.

PARTS REQUIRED

ITEM	QTY	U/M	PART NUMBER	DESCRIPTION	REF
1	6	EA	102-00071-0000	CAPACITOR, VARIABLE 0.6 - 4.5PF	C15-C20
2	A/R	A/R	016-01082-0000	RTV CLEAR #3145	N/A

MODIFICATION PROCEDURE

CAUTION

ANY DISASSEMBLY/ASSEMBLY OF THIS UNIT MUST BE DONE AT A STATIC SAFE WORKSTATION. REMOVED MODULES SHOULD BE PLACED IN ANTISTATIC BAGS WHEN NOT INSTALLED IN THE UNIT.

Open the DM-441B and gain access to the Receiver Module (PN 300-07559-000x) per the Maintenance Manual and perform the following modification:

Note: Unless otherwise noted, the sequence of rework can be adjusted to facilitate the process.

1. Remove and discard C15, 16 and 17 and replace with Item 1 (Ref Figure 1A and 1B).

Note: The replacement parts must be positioned precisely as shown in the figure to avoid tuning and dust cover alignment problems. The replacement part leads may need to be bent outward to facilitate installation in some cases.

2. Remove and discard C18, 19 and 20 and replace with Item 1 (Ref Figure 2A and 2B).

Note: The same installation precautions must be taken as in Step 1 above.

3. Perform receiver module alignment IAW the Maintenance Manual and verify that the sensitivity is within specification.
4. Apply Item 2 (RTV adhesive) to the top of each (C15-C20) piston to secure the new tuning positions.
5. Identify the unit with the procedure as described and reassemble the unit in reverse order of disassembly.

IDENTIFICATION PROCEDURE

Mark WSI-18 on the Receiver board.

TESTING PROCEDURE

Perform a complete functional test of the unit in accordance with the appropriate Maintenance Manual Return to Service procedure.

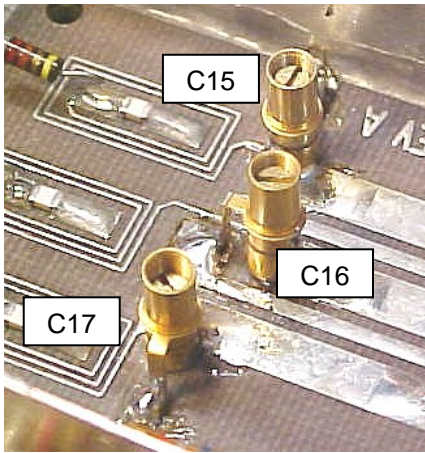


Fig. 1-A

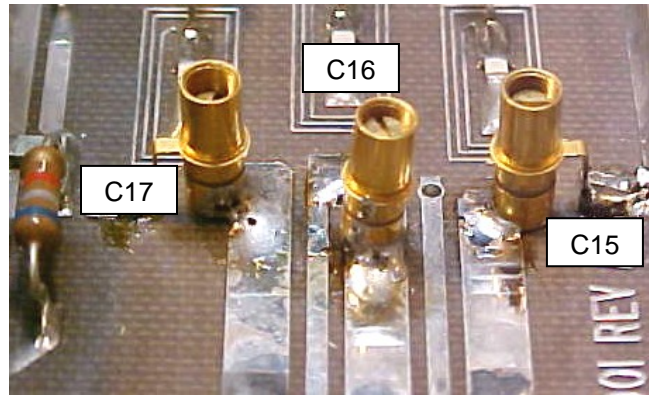


Fig. 1-B

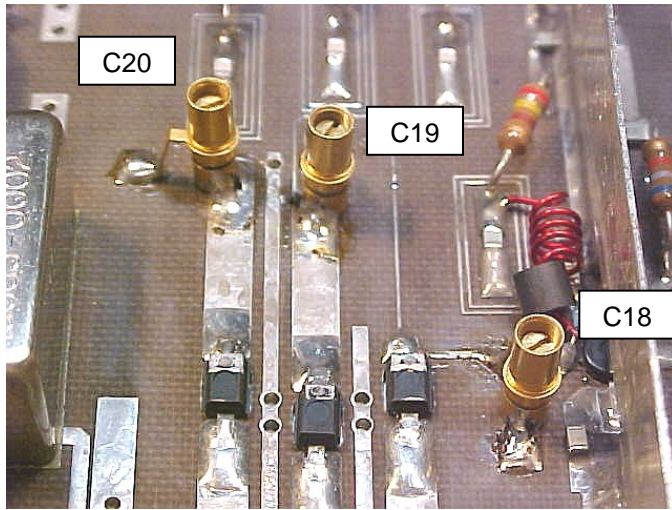


Fig. 2-A

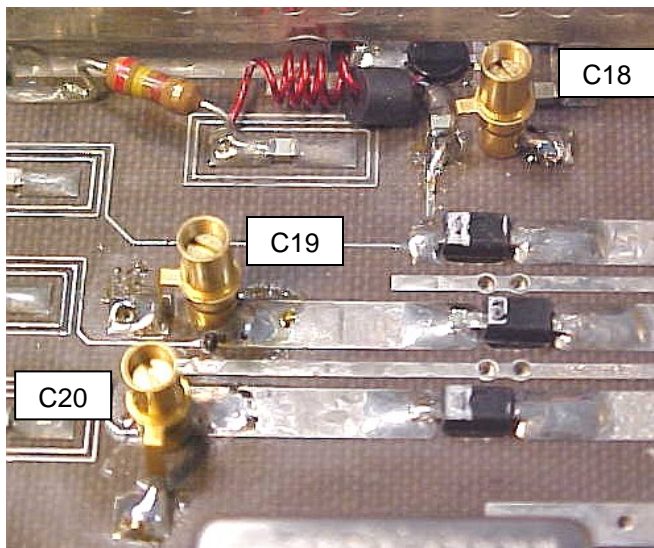


Fig. 2-B