

Wulfsberg Series III™: VNS 41A VHF Navigation System



PRODUCT DESCRIPTION

The VNS 41A Nav System is a digital navigation system which combines VOR/LOC, Glideslope and Marker Beacon functions, all part of the VN-411B unit. FM immunity protection is a standard feature. The ARINC 429 digital data bus offers compatibility with EFIS/LCD displays, the Wulfsberg RMS 555 Radio Management System and Flight Management Systems. Additional interfaces are provided to HSI's, CDI's and RMI's. The VN-411B converts VOR/LOC and Glideslope information to digital format and effectively eliminates traditional CDI needle oscillations.

Features

- Includes Glideslope and Marker Beacon
- Digital VOR/LOC and Glideslope Converters
- FM Immunity Standard
- Elimination of CDI Needle Oscillations
- Digital Radial/Bearing Readout
- Optional Stand-alone Control Heads (CD-413B, CVN-252, CCN-955)
- Continuous Self-test
- Built-in Diagnostics
- ARINC 429 Digital Data Bus
- Special Rotor Modulation Filter for Helicopter Operation

Wulfsberg Series III™: VNS 41A VHF Navigation System

Specifications

FAA TSO:	C34c, C35d, C36c, C40d
Power Requirements	27.5 Vdc Aircraft Power (+/- 20%)
Current Requirements	0.8 Amp
Weight	5.9 lbs. (2.68 kg)
Temperature	-67°F to 158°F (-55°C to +70°C)
Altitude	55,000 ft (16,764 m)
Frequency Range	108 – 117.95 MHz
Channel Spacing	50 kHz
Physical Dimensions	4.10 x 4.00 x 13.33 in. (104.14 x 101.6 x 338.58 mm)

Available Configurations (contact Wulfsberg for alternate configurations)

Configuration Variation	Description
066-1101-00	VN-411B VOR/ILS/MB Nav, 10mW Audio, RAD
066-1101-31	VN-411B VOR/ILS/MB Nav, 10mW Audio, BRG
066-1101-50	VN-411B VOR/ILS/MB Nav, 40mW Audio, RAD
066-1101-60	VN-411B VOR/ILS/MB Nav, 40mW, RAD, HIRF/Lightning

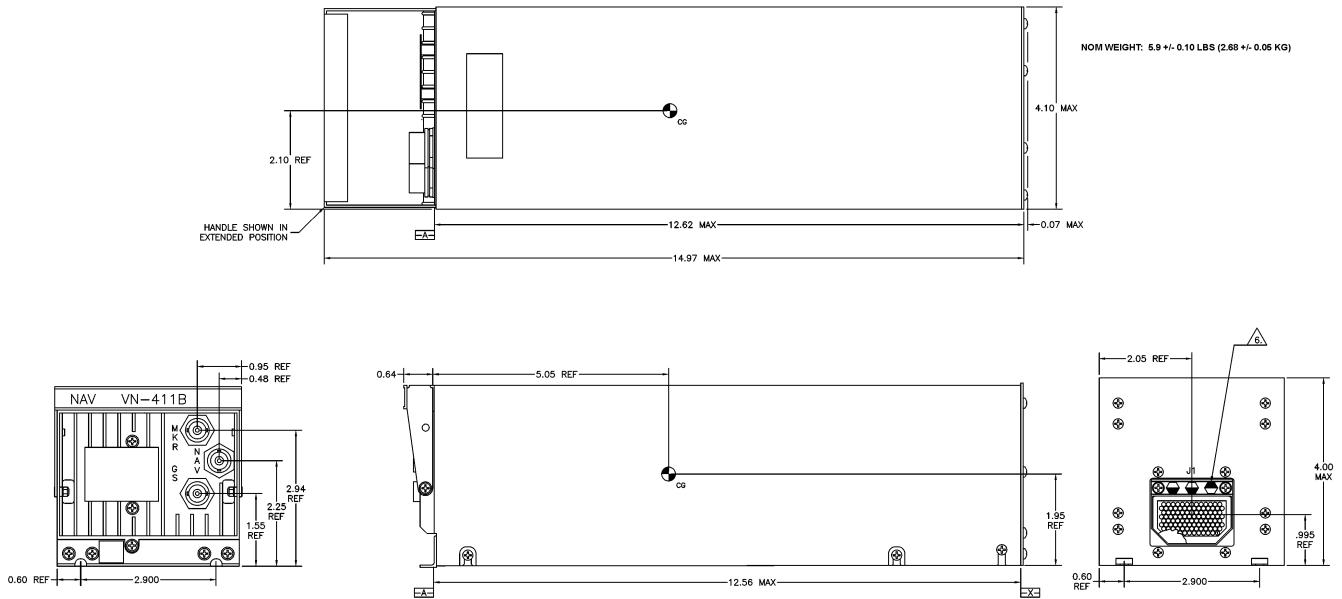
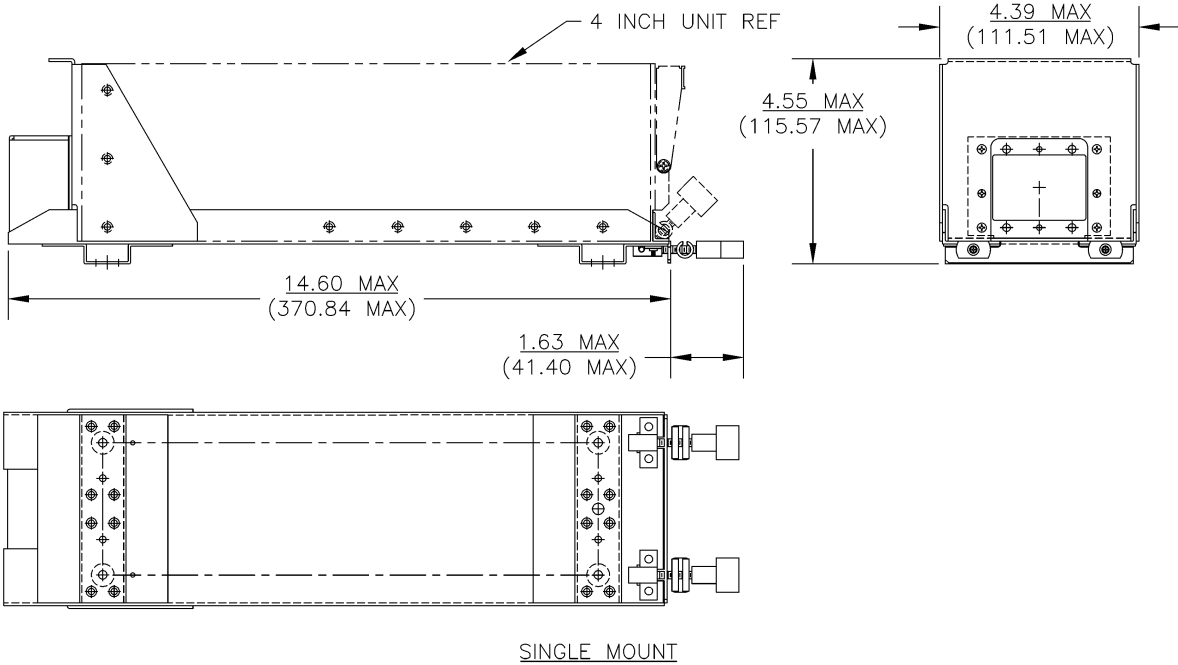
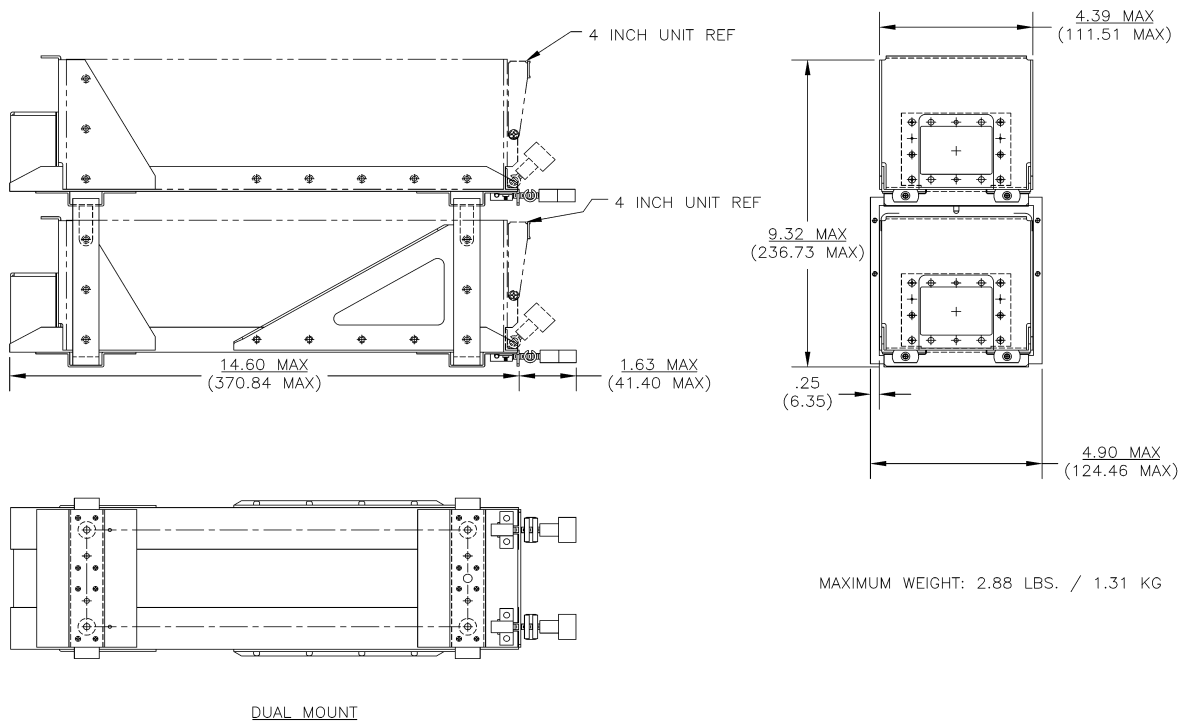


Figure 14. VN-411B Outline Drawing
Portions of Dwg No. 300-04167-0000

Wulfsberg Series III™: VNS 41A VHF Navigation System



**Figure 15. Mounting Tray Outline Drawing, 4-inch (Single Mount)
Portions of Dwg No. 154-04047**



**Figure 16. Mounting Tray Outline Drawing, 4-inch (Dual Mount)
Portions of Dwg No. 154-04047**