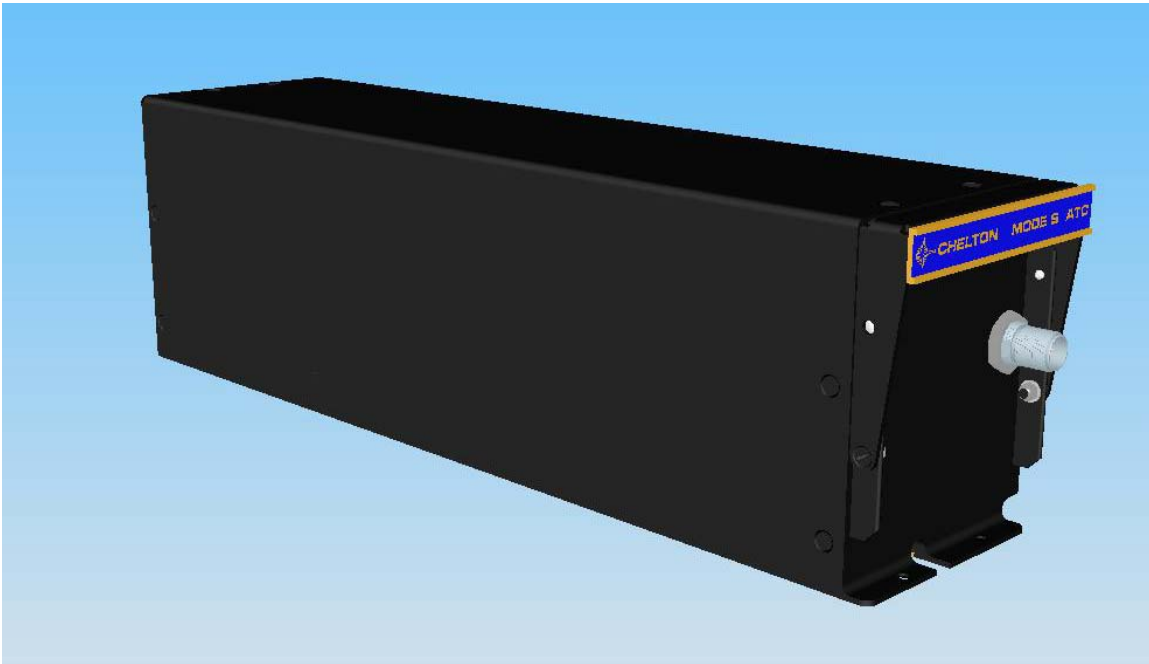


Wulfsberg FliteLine™: CTR-351 ATC Mode S Transponder



PRODUCT DESCRIPTION

The FliteLine CTR-351 System is a full Mode S Transponder System which provides complete compliance with current ATC requirements and operation capability within the future CNS ATN network. It responds to ATC based surveillance radar interrogations to provide position, identification and altitude. Capabilities to support ADS and functions as an airborne data link terminal. Critical element for safe operations within the ATC environment.

Features

- 300 Watt Transmitter Output
- ARINC 429 Serial Bus Control
- Level 3 Messaging
- Interchangeable with Honeywell Transponder
- Solid State Transmitter
- Extensive Self-test Initiated From Control Display
- Exclusive Use of Can Bus
- Automatic Hijack Mode

Wulfsberg FliteLine™: CTR-351 ATC Mode S Transponder

Specifications

Certification:

FAA TSO: C112
 EASA ETSO: 2C112a
 MOPS:
 RTCA: DO-181
 EUROCAE: ED-73A
 ICAO: Level 3A

Environmental:

RTCA: DO-160D
 EUROCAE: ED-14D

Transmit Frequency 1090 MHz

Power Requirement 28 Vdc

Dimensions 3.00 x 4.00 x 12.62 inches (76.2 x 101.6 x 320.55 mm)

Weight 4.0 lbs (1.81 kg)

ARINC 429 High Speed and ARINC 575 Gillham Altitude Interface

RMS-555 Radio Management System Interface

Configuration Available

Configuration Variation	Description
400-048001-0000	CTR-351 Transponder, ATC Mode S, [Sales@Wulfsberg.com for Info]

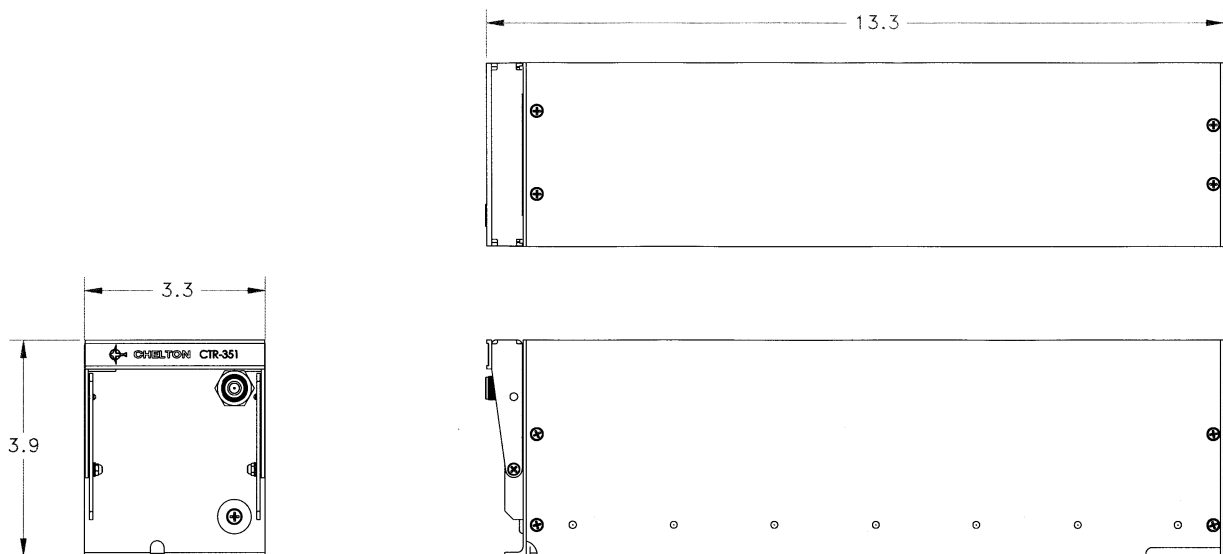


Figure 4. CTR-351 Outline Drawing
 Portions of Dwg No. 154-048001