

## Tactical Communication Products: C-1000 Control Head

---



---

### PRODUCT DESCRIPTION

---

The C-1000/C-1000S Control Head is used exclusively with Wulfsberg Flexcomm I single band Transceivers. It is capable of controlling the RT-30, RT-118, RT-138, RT-138F, RT-450, and RT-406F model radios. Up to three single band radios may be connected to the C-1000. The C-1000 is a fully frequency-agile Control Unit which allows the pilot to manually dial in a transmit and receive frequency via thumbwheel switches. In addition, the C-1000 has 30 preset channels that are programmable from the front panel. The C-1000 is a low-cost option for operators who prefer traditional thumbwheel switching and require limited memory channel capacity.

#### **Features**

- Simple to Operate
- Controls up to Three Transceivers
- 30 User Programmable Presets
- Manual Frequency Control
- 32 CTCSS Tone Control
- "S" Model for External Encryption Control

# Tactical Communication Products: C-1000 Control Head

## Specifications

Power Requirements	27.5 Vdc Aircraft Power (+/- 20%)
Current Requirements	0.5 amps Maximum
Weight	2.6 lbs. (1.18 kg)
Temperature	-22°F to +140°F (-30°C to +60°C)
Radio Interfaces	RT-30, RT-118, RT-138(F), RT-450, RT-406F
Frequency Steps	2.5 kHz
Preset Channel Memory	30 Channels

## Available Configuration

Configuration Variation	Description
400-0106-010	C-1000 Flexcomm I Control, 28V BLK

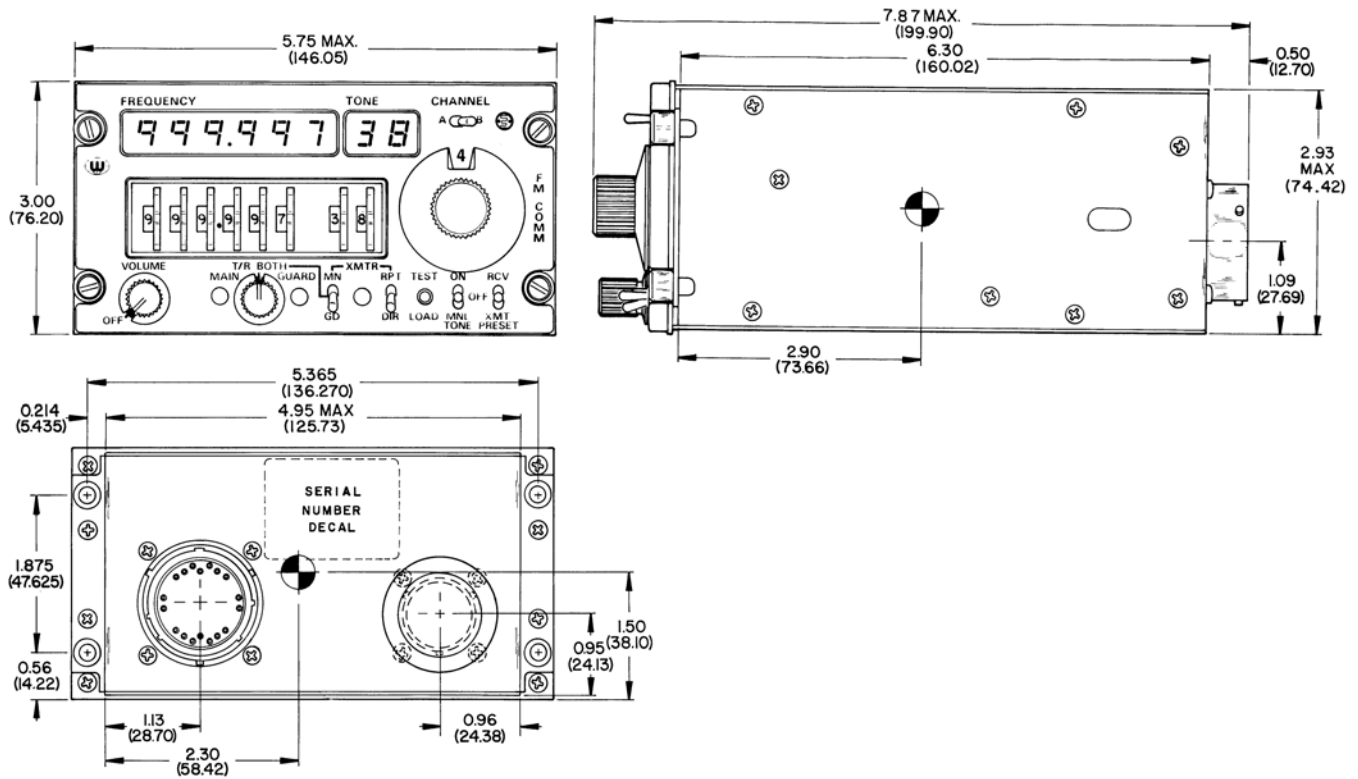


Figure 24. C-1000 Outline Drawing  
Portions of Dwg No. 147-0133-000